

Questions

Lesson One

1- Circle the living organisms:-

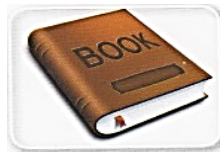
1-



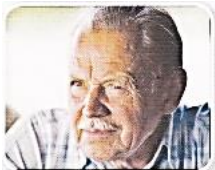
2-



3-



4-



5-





Science

6-



7-



8-



9-



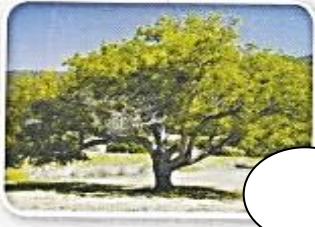
10-





Science

2- Look, read and mark (✓) or (x):-



Tree is a nonliving thing



Pen is a living organism



He is a human



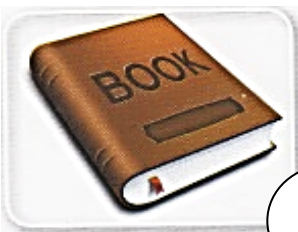
Door is a nonliving



Cat is an animal



Palm tree is a living organism



Book is living organism



Ruler is a nonliving thing





Toy is a living organism



Woman is a plant



A goat is an animal



T.V. is a living organism





Science

3- Look, read and choose:-



Dog is

(an animal - plant)



Tree is

(an animal - a plant)



A rose is

(animal - plant)



A boy is

(human - plant)



A key is

(animal - thing)



Cat is

(an animal - a plant)





Science



A hen is
(animal - plant)



A door is
(animal - thing)



A computer is
(plant - thing)



A window is
(a plant - thing)



Lesson Two

1- Mark (√) or (x):-

1- A door doesn't eat.



()

2- A boy doesn't breath.



()

3- A tree can move.



()

4- A book can eat.



()

5- A girl can't feed.



()

6- A window can breath.



()

7- A dog can't move.



()

8- An umbrella can reproduce.



()

9- A woman can move.



()

10- A grass can't move.



()

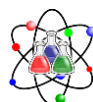




Science

2- Choose:-

- 1- A man (can - can't) grow.
- 2- A book (can - can't) eat.
- 3- A computer (can - can't) move
- 4- A cat (can - can't) reproduce.
- 5- A tree (can - can't) breathe.
- 6- An umbrella (can - can't) eat.
- 7- Humans (can - can't) excrete.
- 8- Fish (can - can't) feel.
- 9- Window (can - can't) reproduce.
- 10- Duck (can - can't) move.





Lesson Three

1- Put (✓) or (x) :-

- 1- Plants don't need light. ()
- 2- Pen can feel. ()
- 3- Boy needs food. ()
- 4- Living organisms can live without light. ()
- 5- Living organisms feel. ()
- 6- Door can grow. ()
- 7- Plants need water to grow. ()
- 8- Cats and dog live in dark. ()
- 9- Living organisms need air and light only. ()





Science

2- Choose :-

- 1- Boy (can - can't) grow.
- 2- Plants (need - don't need) light.
- 3- Pen (need - doesn't need) food.
- 4- Monkey (need - doesn't need) suitable temperature.
- 5- Man (need - doesn't need) light.

3- Circle the correct picture:-

1- Needs water to live.



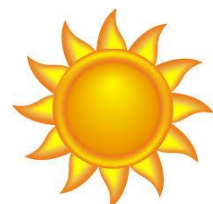
2- Doesn't need light.



3- Living organism need.



4- Tree needs.



Answers

Lesson One

1- Circle the living organisms:-

- | | | | |
|----|---|---|---|
| 1- |  |  |  |
| 2- |  |  |  |
| 3- |  |  |  |
| 4- |  |  |  |
| 5- |  |  |  |
| 6- |  |  |  |
| 7- |  |  |  |



8-



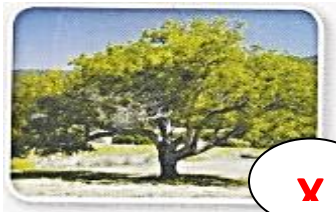
9-



10-



2- Look, read and mark (✓) or (x):-



x

Tree is a nonliving thing



x

Pen is a living organism



✓

He is a human



✓

Door is a nonliving





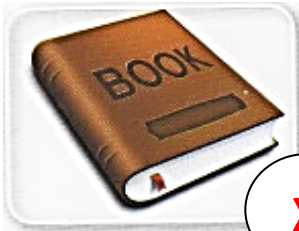
✓

Cat is an animal



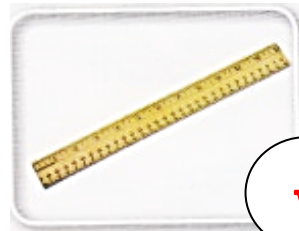
✓

Palm tree is a living organism



✗

Book is living organism



✓

Ruler is a nonliving thing



✗

Toy is a living organism



✗

Woman is a plant



✓

A goat is an animal



✗

T.V. is a living organism





Science

3- Look, read and choose:-



Dog is

(an animal - plant)



(an animal - a plant)



A rose is

(animal - plant)



A boy is

(human - plant)



A key is

(animal - thing)



Cat is

(an animal - a plant)





Science



A hen is

(animal - plant)



A door is

(animal - thing)



A computer is

(plant - thing)



A window is

(a plant - thing)



1 - Mark (✓) or (x):-

1- A door doesn't eat.



(✓)

2- A boy doesn't breath.



(x)

3- A tree can move.



(✓)

4- A book can eat.



(x)

5- A girl can't feed.



(x)

6- A window can breath.



(x)

7- A dog can't move.



(x)

8- An umbrella can reproduce.



(x)

9- A woman can move.



(✓)

10- A grass can't move.



(x)





Science

Choose:-

- 11- A man (can - can't) grow.
- 12- A book (can - can't) eat.
- 13- A computer (can - can't) move
- 14- A cat (can - can't) reproduce.
- 15- A tree (can - can't) breathe.
- 16- An umbrella (can - can't) eat.
- 17- Humans (can - can't) excrete.
- 18- Fish (can - can't) feel.
- 19- Window (can - can't) reproduce.
- 20- Duck (can - can't) move.





Lesson Three

1- Put (✓) or (x) :-

- 1- Plants don't need light. (x)
- 2- Pen can feel. (x)
- 3- Boy needs food. (✓)
- 4- Living organisms can live without light. (x)
- 5- Living organisms feel. (✓)
- 6- Door can grow. (x)
- 7- Plants need water to grow. (✓)
- 8- Cats and dog live in dark. (x)
- 9- Living organisms need air and light only. (x)





Science

2- Choose :-

- 1- Boy (can - can't) grow.
- 2- Plants (need - don't need) light.
- 3- Pen (need - doesn't need) food.
- 4- Monkey (need - doesn't need) suitable temperature.
- 5- Man (need - doesn't need) light.

3- Circle the correct picture:-

1- Needs water to live.



2- Doesn't need light.



3- Living organism need.



4- Tree needs.

